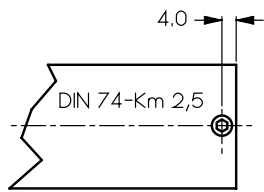
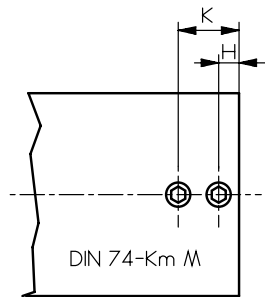


BEFESTIGUNG DER SPINDELMUTTER

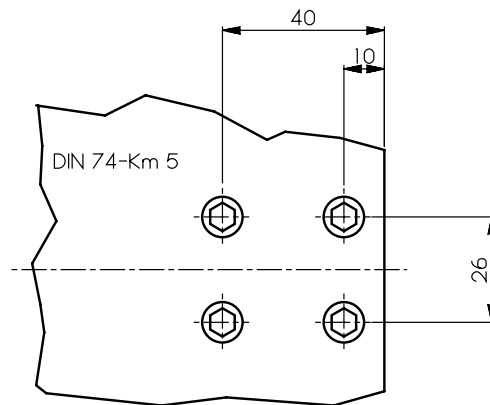
Ansicht X



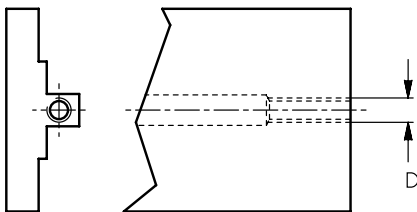
Gr. 30



Gr. 50 - 150



Gr. 200 - 300



Gr. 30 + Gr. 50 Rollen- und TV-Schlitten
Mutterngewinde direkt im Schlitten

A	B	C	D	d_{h7}	D_o	E	F	G	H	K	M
Breite											
30	23,5	8	M3	2	14	9,5	10	10	-	-	2,5
50	40,5	16	M6	4	24	18,5	20	16	5	15	3
75	48	18	M 8 x 1	5	30	20	24	18	5	15	4
100	48	18	M 12 x 1	5	30	20	24	18	7,5	22,5	4
150	69	27	M 16 x 1	10	48	25	32	30	10	30	6
200	69	27	M 20 x 2	10	48	25	32	30	-	-	5
300	102	39	M 20 x 2	14	68	48	49	40	-	-	5